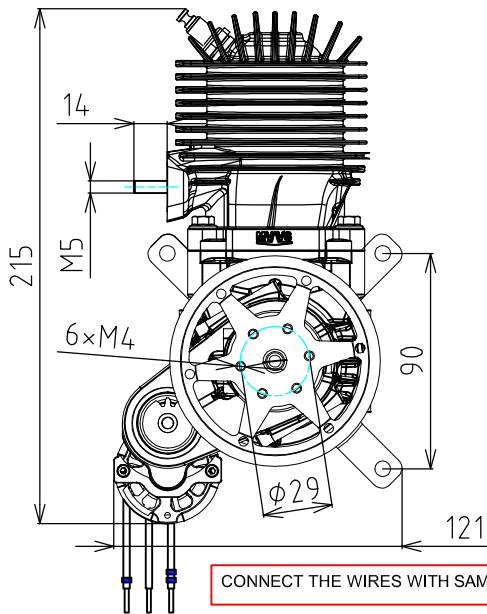


MVVS 80 IRS 3007A

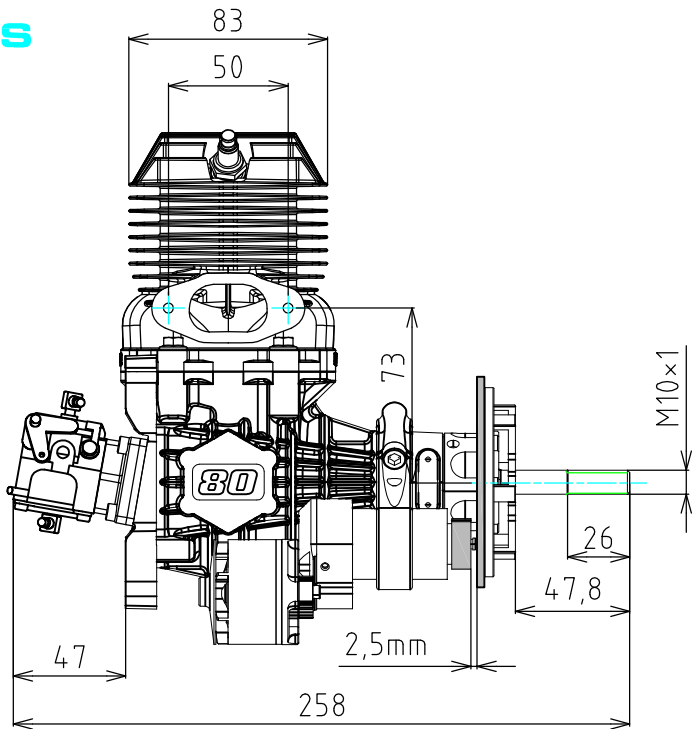


CONNECT THE WIRES WITH SAME MARK.

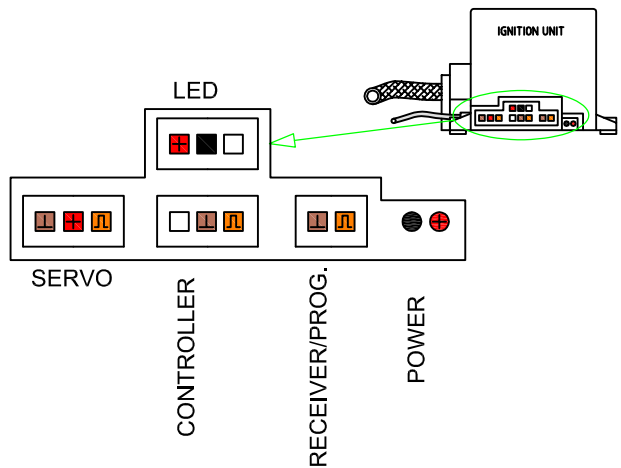
IF IT IS NECESSARY TO EXTEND THE WIRES, ALWAYS EXTEND WIRES BETWEEN ELECTRIC MOTOR AND CONTROLLER. KEEP THE WIRES BETWEEN CONTROLLER AND BATTERIES SHORT.

RECOMMENDED BATTERIES: 3S AT LEAST 2600 [mAh], ABLE TO HANDLE MAXIMUM LOAD OVER 100 [A] FOR SHORT TIME

USING IGNITION CABLE PLUG THE IGNITION INTO ONE OF THE SPARE RECEIVER CHANNELS THAT PROVIDES TWO PWM POSITIONS.



ADJUST GAP BETWEEN SPROCKETS ~ 2.5 mm.



WHILE LED IS LIGHTING, IGNITION GENERATES SPARK.

STEP 1

TRANSMITTER CONNECTION CHECK	
<ul style="list-style-type: none"> - MAKE SURE CONTROLLER IS NOT CONNECTED TO POWER SUPPLY - SWITCH RECEIVER AND TRANSMITTER ON - CONNECT IGNITION TO BATTERY - CHECK BOTH TRANSMITTER LEVERS: <ul style="list-style-type: none"> PWM BELOW 1.3ms = LED IS NOT LIGHTING PWM ABOVE 1.7ms = LED IS LIGHTING IF THE LED DOES NOT REACT TO THE LEVER CHANGE, <ul style="list-style-type: none"> - either receiver batteries are low - or try switching to other channel - TURN THE IGNITION OFF! 	

STEP 2

SET TRANSMITTER TO REQUIRED POSITION.	
PWM < 1.3 ms	BATTERY TEST DISABLED.
PWM ~ 1.5 ms	PROGRAMMING MODE - USE THROTTLE CHANNEL FOR IGNITION ADJUSTMENT. (servotester can be used) FOLLOW IGNITION UNIT INSTRUCTIONS.
PWM > 1.7 ms	BATTERY TEST ENABLED.

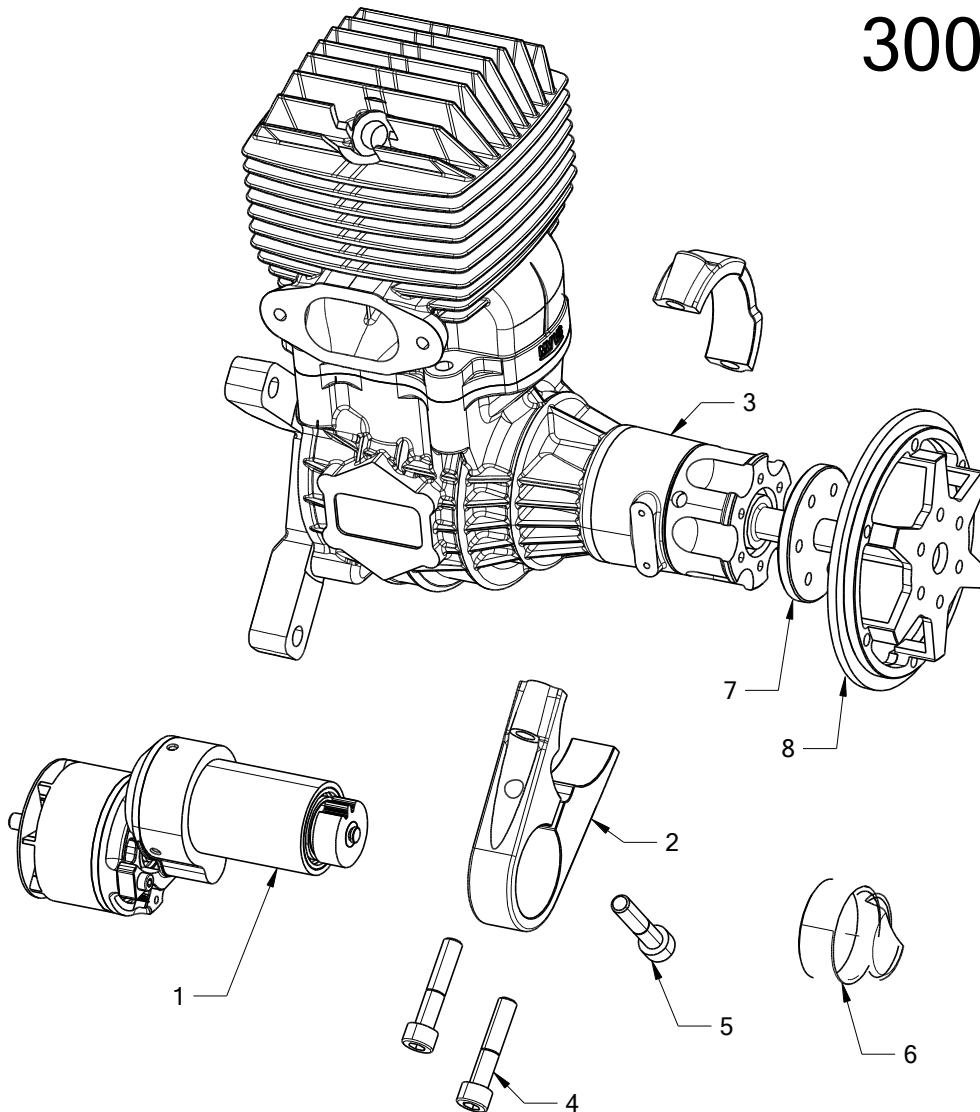
STEP 3

<p>PUT YOUR HANDS OUTSIDE PROPELLER RADIUS, OTHERWISE YOU RISK SERIOUS INJURY</p> <p>POWER UP THE IGNITION AND CONTROLLER.</p> <p>NEVER POWER UP IGNITION IF BOOT IS NOT CONNECTED TO SPARK PLUG!</p>

STEP 4

ENGINE START / ENTER TO PROGRAMMING SEQUENCE	
PWM < 1.3 ms	IGNITION DOES NOT GENERATE SPARK, LED IS NOT LIGHTING.
PWM ~ 1.5 ms	WAIT 10 SEC. TILL IGNITION MAKES SOUND SIGNAL, NOW YOU ARE IN PROGRAMMING SEQUENCE. FOLLOW IGNITION UNIT INSTRUCTIONS - PROGRAMMING SEQUENCE.
PWM > 1.7 ms	IGNITION GENERATES SPARK. STARTER STARTS AND IS AUTOMATICALLY SWITCHED OFF WHEN ENGINE-IDLING. LED IS LIGHTING.

3007A



- 1-UPEVNĚTE SENZOR ZAPALOVÁNÍ NA MOTOR
- 2-VLOŽTE STARTÉR (1) DO DRŽÁKU (2)
- 3-UPEVNĚTE DRŽÁK SE STARTÉREM NA UPRAVENÝ PLOŠEK KLÍKOVÉ SKŘÍNĚ (3)
- 4-ČÁSTEČNĚ UTÁHNĚTE ŠROUBY (4) A (5)
- 5-VLOŽTE PODLOŽKU VRTULE (7) NA CENTRÁLNÍ ŠROUB VRTULE
- 6-UPEVNĚTE OZUBENÝ VĚNEC (8) A VRTULI NA UNAŠEČ MOTORU
- 7-NASTAVTE MEZERU MEZI PASTORKEM A VĚNCEM NA 2,5mm
- 8-UTÁHNĚTE ŠROUB (5) 10Nm
- 9-UTÁHNĚTE ŠROUBY (4) 10Nm
- 10-PO OVĚŘENÍ ZÁSTAVBY MOTORU A ZKUŠEBNÍM STARTU SUNDEJTE VRTULI
- 11-NASAĎTE KRYT PASTORKU (6) A POJISTĚTE LOCTITEM 326

- 1-FIX IGNITION SENSOR ON ENGINE
- 2-PUT STARTER (1) INTO FLANGE (2)
- 3-FIX FLANGE WITH STARTER ON ADAPTED SURFACE OF CRANK CASE (3)
- 4-PARTLY TIGHTEN BOLTS (4) A (5)
- 5-PUT PROPELLER WASHER (7) ON CENTRAL PROPELLER SCREW
- 6-FIX SPROCKET (8) AND PROPELLER ON ENGINE'S DRIVE WASHER
- 7-ADJUST GAP BETWEEN SPROCKETS TO 2,5mm
- 8-TIGHTEN BOLT (5) 10Nm
- 9-TIGHTEN BOLTS (4) 10Nm
- 10-AFTER A TESTING START REMOVE PROPELLER AND FIX SPROCKET COVER (6)
- 11-SECURE THE COVER BY LOCTITE 326